



L&T Construction & Mining Machinery

L&T 491

MINI TANDEM COMPACTOR

Contact : 9300723311

Operating Weight: 3,400 kg
Frequency: 55/65 Hz
Gross Power: 44.5 hp@2300 rpm
Engine: Mahindra MDI 2500



Manufactured by

L&T Construction Equipment Limited

SALIENT FEATURES

- Highest operating weight in its class
- High compaction forces
- Highest drum shell thickness in its class
- Drum width 1.2 meter ideal for shoulder compaction
- Longitudinal engine mounting enables best-in-class drum edge visibility
- Shorter turning radius: good manoeuvrability
- Openable engine hood for better service accessibility
- 1mx1m operator visibility all around the machine
- Heavy duty articulation joint
- Better ground clearance for working in uneven terrain
- Efficient filtration system



Ground Level Service Access

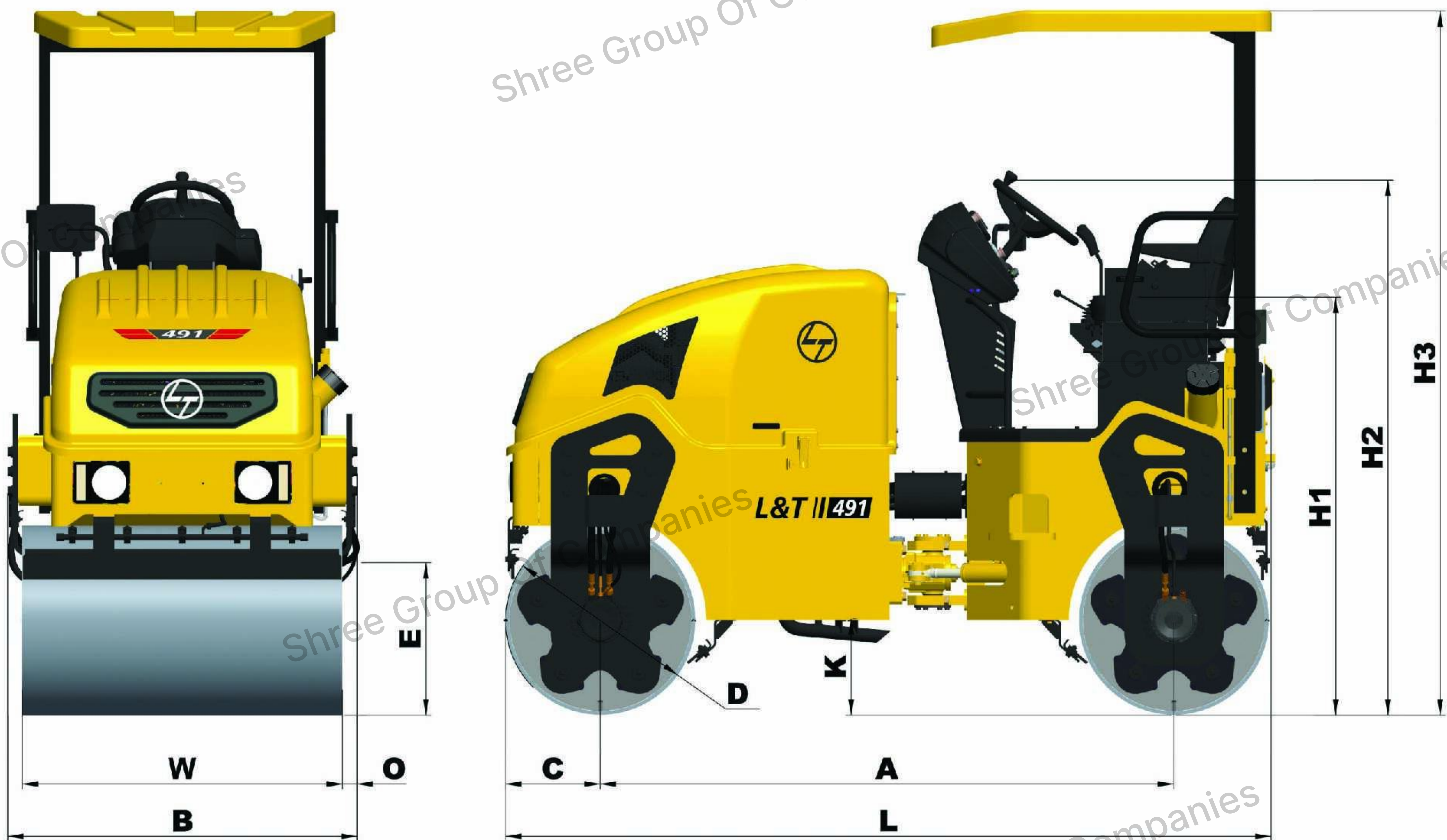


Sturdy Articulation Joint



Excellent all-Round Visibility

MACHINE DIMENSION



L	A	D	C	K	H1	H2	H3	W	B	O	E
2928	2193	725	362	369	1600	2048	2695	1225	1339	56	584

All Dimensional Parameters are within $\pm 2.5\%$ of the Specified values

SPECIFICATIONS

MACHINE MASS	
Operating weight (kg)	3400
Working Weight (kg)	3485
Static weight @ front / rear drum (kg)	1700 / 1700
Static Linear Load Front / Rear (kg/cm)	13.6 / 13.6
VIBRATION SYSTEM	
Pump	Fixed displacement Gear pump
Motors	Fixed displacement Gear motor
Vibration Stage	Dual Frequency
Frequency (Hz)	55 / 65
Amplitude (mm)	0.6
Centrifugal Force (Kgf)	4587 / 3160
DRUMS	
Width (mm)	1225
Diameter (mm)	725
Shell Thickness (mm)	13.5
Finish	Machined Drum with chamfered edges
TRAVEL	
Type	Hydrostatic drive with Infinitely variable displacement Axial piston pump
Drum Drive Motors	Low speed high torque motor
MACHINE SPEED	
Working Speed (kmph)	0 - 6 kmph
Travel Speed (kmph)	0 - 12 kmph
GRADEABILITY (Theoretical)	
Working Gradient	27 %
Travel Gradient	32 %
ENGINE	
Make	Mahindra
Model	MDI 2500
Type	4 Stroke Inline, Water Cooled
Cylinder	4
Bore/Stroke	88.9 mm x 101.6 mm
Displacement	2523 cc
Fuel Injection	Direct Injection
Fuel	Diesel
Fuel Filter	Cartridge Type
Aspiration	Natural
Air Filter	Dry Type with Dual Element
Engine oil filter	Spin-on Type
Cooling	Liquid
Engine power (Gross)	44.5 hp@2300 rpm as per ISO 1585
Torque (Max)	157 Nm @ 1400-1500 rpm
ELECTRICALS	
Alternator	55 A
Battery CCA	12 V / 80 Ah

WATER SYSTEM	
Type	Pressure Spray Drum Wetting System
Pump	Diaphragm Water Pumps
Spray Bar	2 : 5 Nozzles
Filtration	Triple filtration
Drum Wipers (per drum)	2
Water Tank Capacity	170 L
STEERING	
Steering Angle	± 40°
Turning Radius (inner)	2.3 m
Drum Oscillation Angle	± 13°
SERVICE CAPACITIES	
Fuel Tank	55 L
Hydraulic Tank	45 L
Engine Crank Case	7 L
Engine Coolant	7.5 L
BRAKE	
Service Brake	Hydrostatic Brake (FNR control)
Parking Brake	Spring Applied Hydraulically Released (SAHR)
Secondary Brake	Hydrostatic Brake (by pressing emergency switch)
STANDARD EQUIPMENT	
<ul style="list-style-type: none"> All-Weather Canopy Rear View Mirror & Rear Work Lamp Tilting engine Hood cover Mobile Charging Point & Utility / Tool Box Weather Proof Rocker Switches Reverse Alarm / Buzzer Rust Proof LLDPE Water Tank 	
OPTIONAL EQUIPMENT	
<ul style="list-style-type: none"> Beacon Lamp DigiEye 	
SAFETY	
<ul style="list-style-type: none"> All-Weather Canopy 2 Point seat belt CMVR Compliant handrails & Steps Parking brake Automatically applied parking brake in case of engine shutdown 	
INDICATORS	
<ul style="list-style-type: none"> Turn indicators Engine coolant temperature Battery charging Low Lube oil pressure Beam selection Hydraulic filter clog Parking brake Neutral 	
GAUGES	
<ul style="list-style-type: none"> Lube oil Pressure Engine Coolant Temperature LCD Hour Meter Fuel level Battery Voltmeter 	

All Dimensional Parameters are within ±2.5% of the Specified values

32, Shivaji Marg, P.O. Box 6223
New Delhi 110 015
 Tel : (011) 40819500

Aspire Towers
 Plot No: 55, 4th Floor
 Industrial Area Phase - 1
Chandigarh 160 002
 Tel : (0172) 4646846

A-28 Indiranagar
 Faizabad Road, First Floor
Lucknow 226 016
 Tel : 0522- 4929920

Monarch Building
 D-236 & 237, Amrapali Marg
 Vaishali Nagar, **Jaipur** 302021
 Tel : (0141) 4385900

Shree Ram Plaza, 2,3 & 4
 1st Floor, Siphon Chauraha
 Bedla Road-**Udaipur** 313 001
 Tel : (0294) 2451 337, 2451 305

3-B, Shakespeare Sarani,
 P.O.Box 619, **Kolkata** 700 071
 Tel : (033) 4400 2433/22831442

Annapoorna Complex
 Plot No. 559, Lewis Road
 Bhubaneswar 751 014, **Odisha**
 Tel : 9777049626

A1/11, Degaul Avenue
 Khoirasol, **Durgapur** 713 212
 Tel : 9830057293

Milanpur Road, Bamuni Maidan
Guwahati 781 021
 Tel : (0361) 4415/4412
 8876554415

101/A, Dumardaga
 PO Booti
Ranchi 835 217
 Jharkhand
 Tel: 9771493164

L&T-House, P.O.Box 119
 191/1, Dhole Patil Road
Pune 411 001
 Tel : (020) 48544259

501, Sakar Complex
 Opp. Gandhigram Rly. Stn.
Ahmedabad 380 009
 Tel : 7949004005

AMN Tower, MIPD - 5th Floor (Q4)
 L&T Campus, Gate No. 3,
 Jogeshwari-Vikhroli Link Road,
 Powai, **Mumbai** - 400 072
 Ph : 022- 68125813/ 5817/5822

Radhadaya Complex
 Near Charodar Complex,
 Old Padra Road, **Vadodara** 390 015
 Tel : (0265) 2334 799

12, Shivaji Marg
 North Ambazari Road,
Nagpur 440 010
 Tel : (0712) 6606441/2260025

131/1 Zone II
 Maharana Pratap Nagar,
Bhopal 462 011
 Tel : (0755) 3080522

Crystal Tower, IVth Floor
 G. E. Road, Telibandha
Raipur (CG) 492006
 Tel: 9752544407

II Floor, Vasantha Chambers
 5-10-173 Fateh Maidan Road
Hyderabad 500 004
 Tel : (040) 47575064

38, Cubbon Road
Bengaluru 560 001
 Tel : (080) 46136139/37

Skybright Building, M.G. Road,
 Ravipuram Junction, P.O.Box 1723,
 Ernakulam, **Kochi** 682 016
 Tel : (0484) 4409401/409

L&T Construction Campus
 TC-1 Building, 2nd Floor,
 Mount Poonamallee Road,
 Manapakkam, **Chennai** 600 089
 Tel: (044) 40706864

No. 73, 8th Street,
 Karpaga Nagar,
 K. Pudur, **Madurai** 625 007.
 Tel: 9003944322

Post Bag 7156
 67, Appuswamy Road
Coimbatore 641 045
 Tel : 9886300106

53-13-2 First Floor, Bank Colony
 Srinivasanagar
Vijayawada 520 008
 Tel : 9061472255

D No 49-38-14/3/2, 1st Floor,
 NGO's Colony, Akkayapalem,
Visakhapatnam - 530 016
 Tel: 0891 - 2711121/124



Marketed & Serviced by:

L&T Construction Equipment

Larsen & Toubro Limited

1st Floor Lakshminarayan Complex, 10/1 Palace Road, Bengaluru- 560 052
 Tel: (080) 22256982/83/84, 40401700

Visit: www.Lntcmb.com



L&T Construction & Mining Machinery



Larsentoubro.cmb

Zonal Offices:

Delhi (011) 40819500

Kolkata (033) 44002433/22831442

Pune (020) 48544259

Jaipur (0141) 4385900

Nagpur (0712) 6606441/2260025

Hyderabad (040) 47575064

Chennai (044) 40706864