



L&T Construction & Mining Machinery

L&T 1190 SOIL COMPACTOR

Contact : 9300723311

Operating Weight: **11,000 kg**

Frequency: **34/31Hz**

Gross Power: **100 hp@2200 rpm**

Engine: **Mahindra & Mahindra VNEF100 CEV-IV**



Manufactured by

L&T Construction Equipment Limited



Higher weight on front drum module for improved compaction

High applied forces for best-in-class compaction

Drum drive option available for improved traction

Digital cluster with anti vandalism cover



Dual frequency selection for easy operation

High drum shell thickness for longer drum life



Collapsible canopy

Isolated operator platform for enhanced operator comfort

Unique Eccentric shaft designed for generating high forces

M&M make electronically controlled CRDI engine with EGR

Limited slip differential axle for better traction

Exhaust at ground level to prevent exhaust gases from blowing onto operator

ENGINE

- ▶ Mahindra & Mahindra VNEF100, 4-cylinder, 4- stroke Inline turbocharged intercooled engine, CEV-IV compliant
- ▶ Electronically controlled pump
- ▶ Fuel Prefilter, Fuel filter Cum Water separator for better filtration
- ▶ Air Pre-cleaner is a standard fitment



HEAVY DUTY STRUCTURES

- ▶ Heavy duty drum with high shell thickness
- ▶ Heavy Duty Frame Structures
- ▶ Unique Eccentric shaft designed for generating high forces
- ▶ Sturdy articulation joint for better life



GRADEABILITY

- ▶ Best-in-class gradeability of 40%
- ▶ Capable of working in hilly terrains and steep slopes
- ▶ Machine capable of working with a shorter turning radius



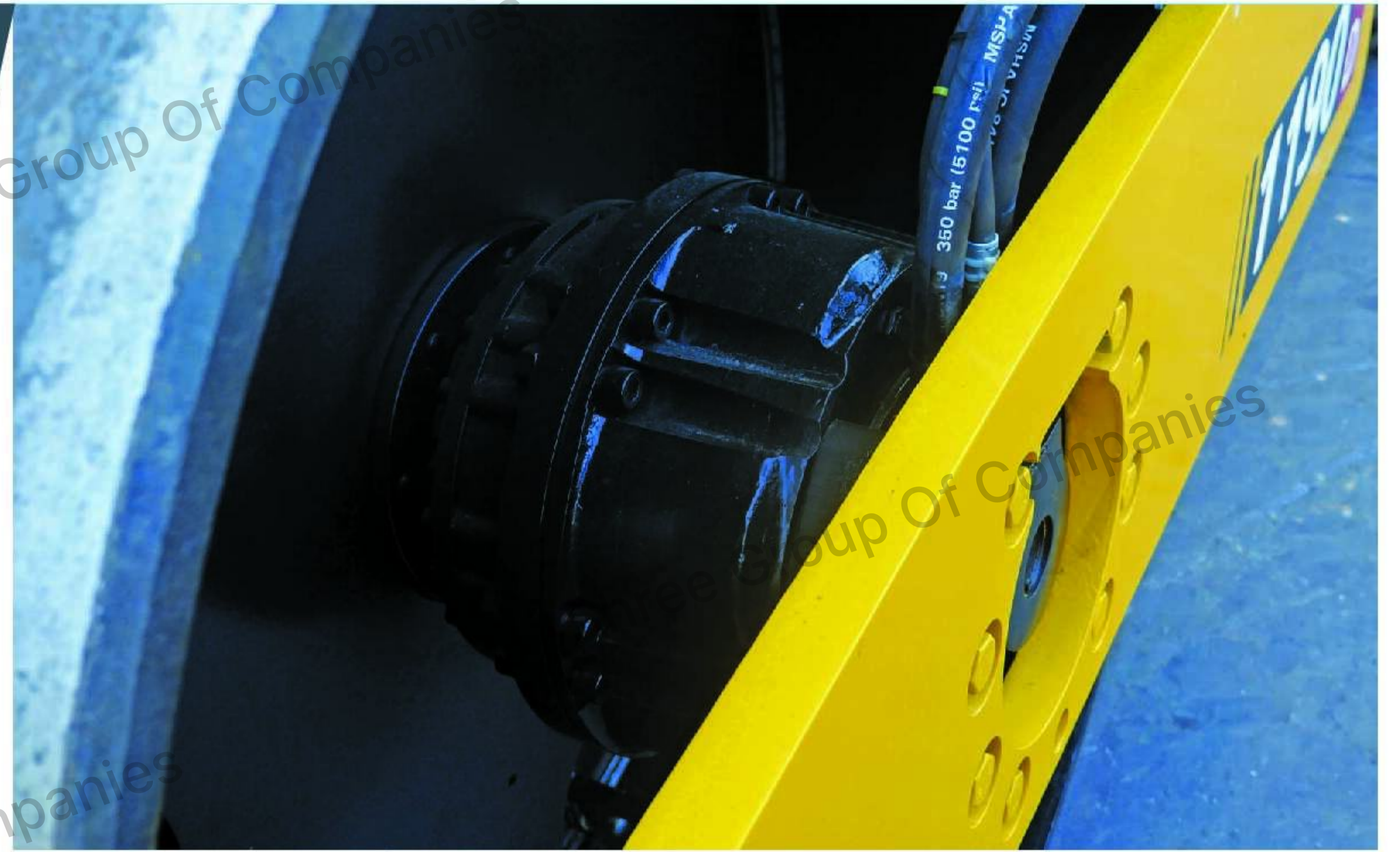
PRODUCTIVITY

Soil Compaction	Sand & Gravel	Mixed Soil	Clay
Compacted Lift thickness in mm	500	400	200
Productivity in Cum/hour	350-600	300-500	170-290

Site conditions will affect actual productivity

HIGH PERFORMANCE HYDRAULIC COMPONENTS

- ▶ Closed circuit hydraulic system with best-in-class heavy duty hydraulic components, enhancing productivity and reliability
- ▶ Hydraulic System designed for optimising productivity

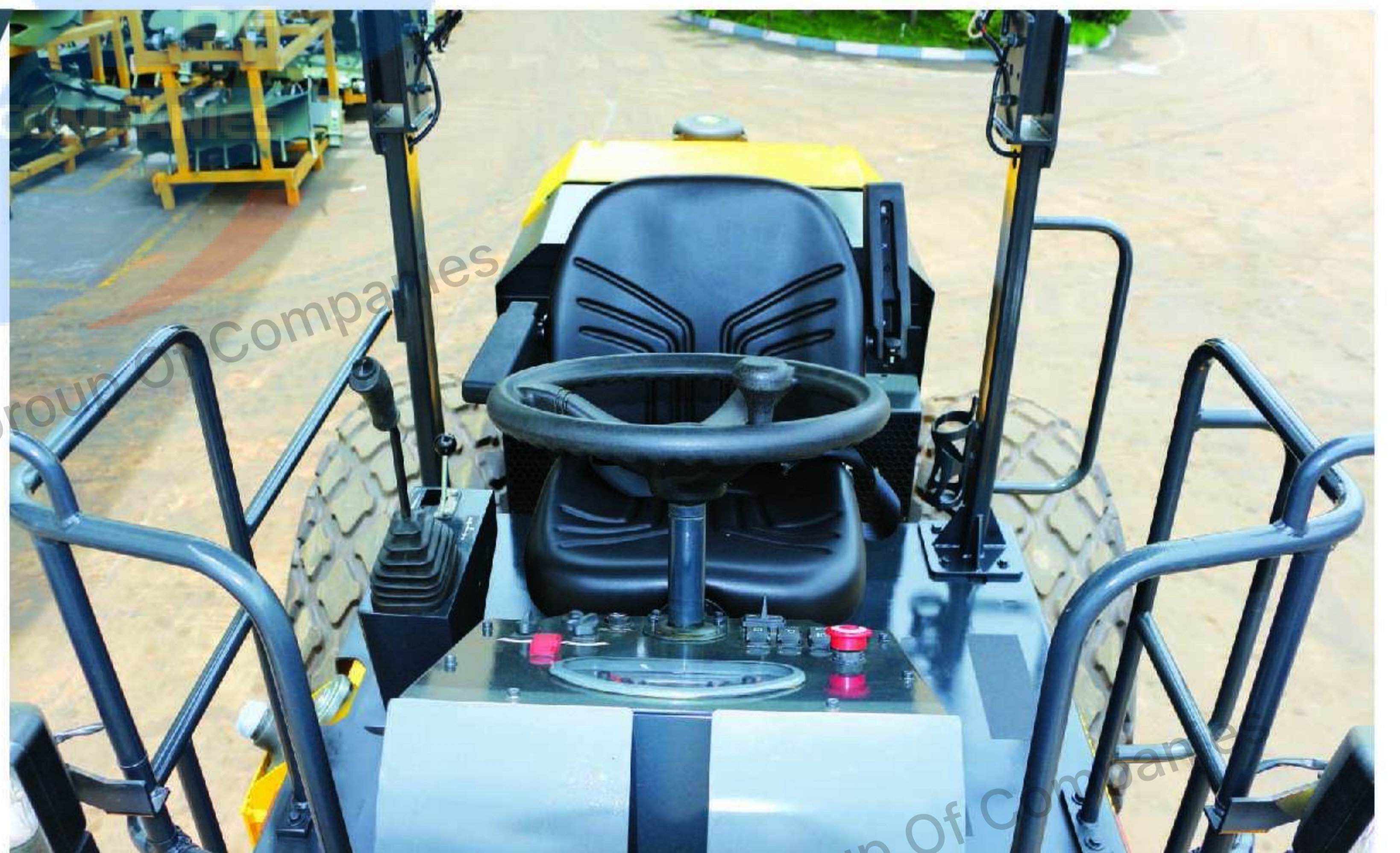


SERVICE ACCESSIBILITY

- ▶ Openable rear hood
- ▶ Easy access to all components
- ▶ Ground level access for all refill points
- ▶ Air Filter is easily accessible

OPERATOR CONSOLE

- ▶ Digital cluster with dashboard and anti-vandalism cover
- ▶ Excellent all round visibility
- ▶ Large size rear view mirror
- ▶ Height adjustable seat with arm rest
- ▶ All around Guard rails for operator safety



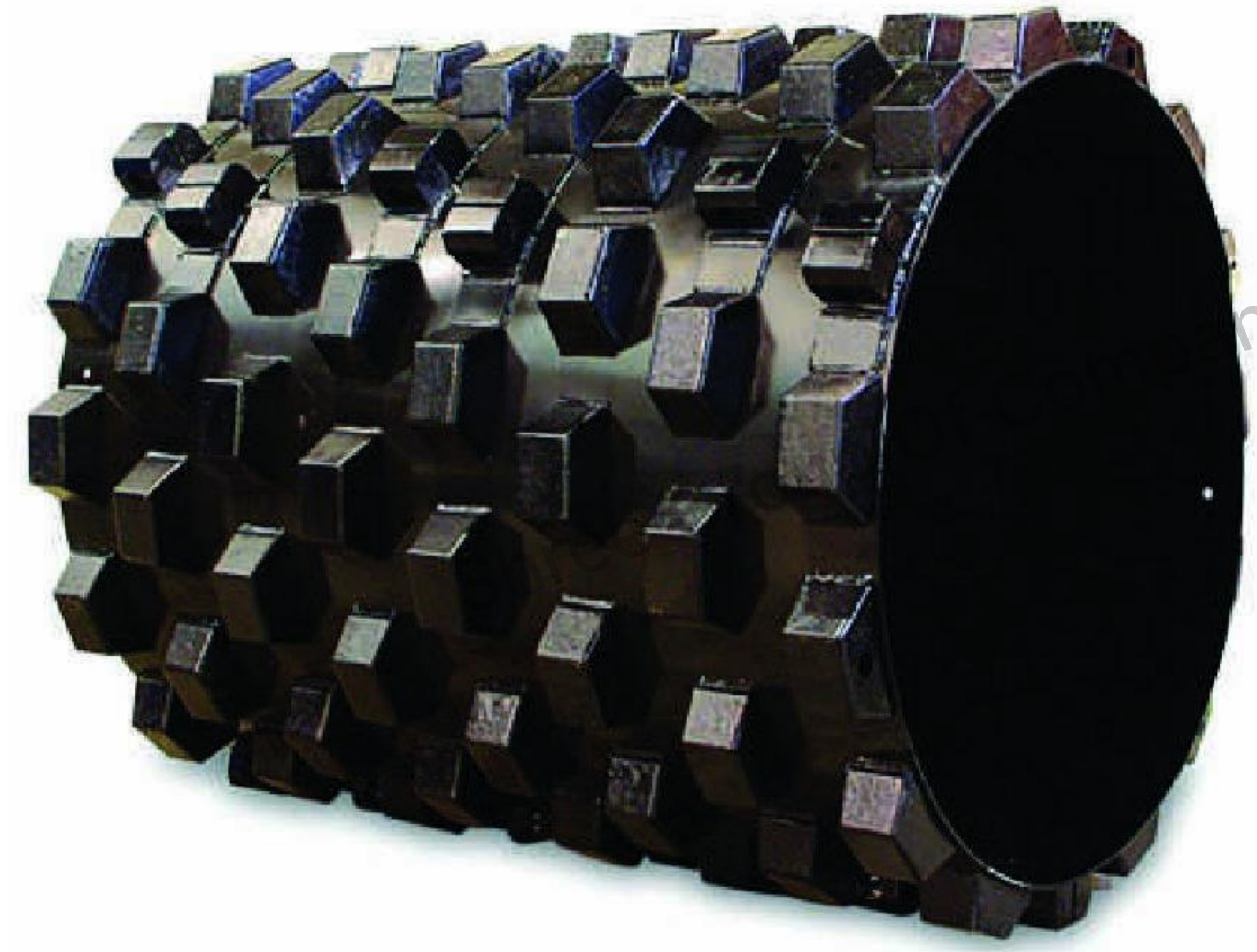
HIGH OPERATING WEIGHT

- ▶ Higher weight of front drum module gives improved compaction results
- ▶ High static linear load reduces the number of passes required for compaction
- ▶ High drum shell thickness of 30mm gives longer shell life



OPTIONAL CLAMP-ON-PADFOOT SHELL

- ▶ Padfoot shell, with a bolt-On type segmentation, can be mounted on drum drive machine.
- ▶ Ideally suited for compacting soils with high clay content

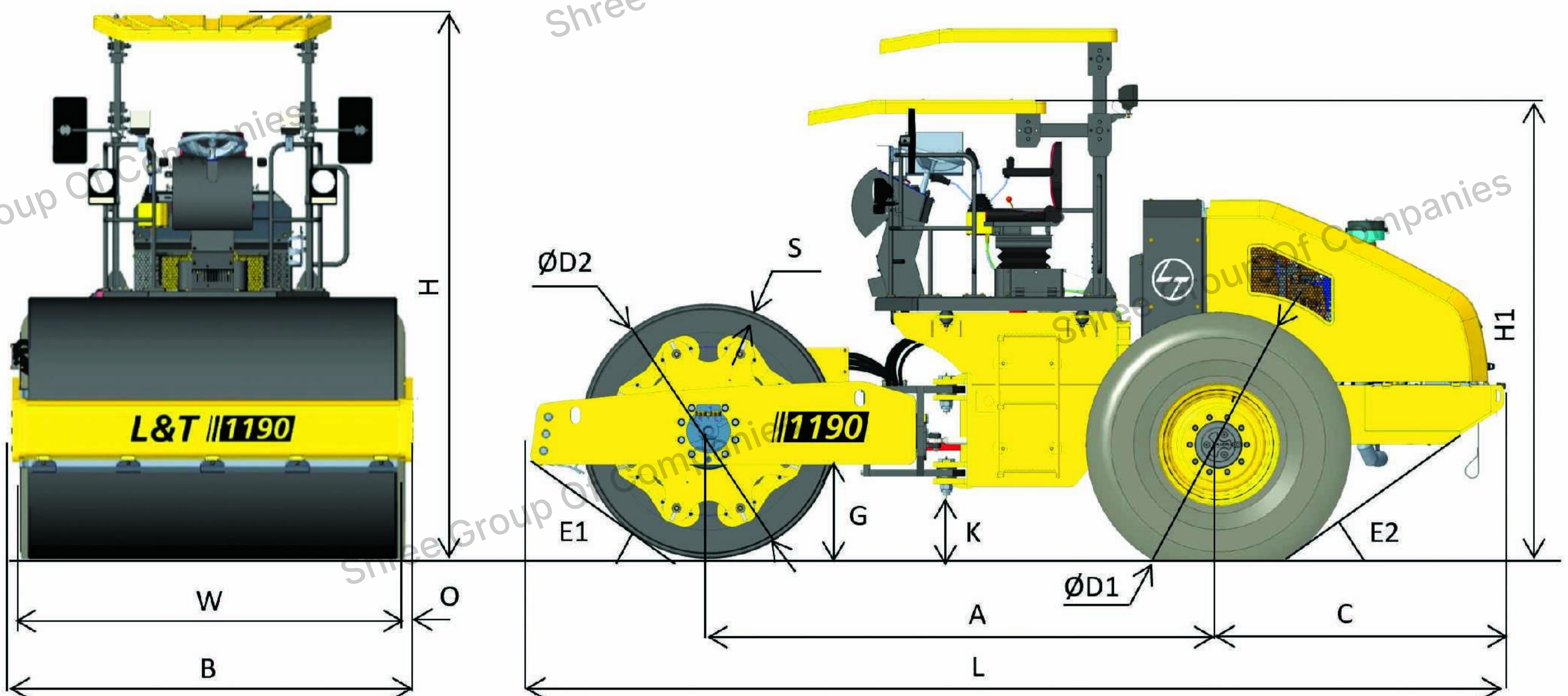


DRUM DRIVE OPTION

- ▶ Drum drive option -L&T 1190 D has better gradeability
- ▶ Ideally suited for poor underfoot conditions



MACHINE DIMENSION



A	B	C	ØD1	ØD2	E1	E2	G	H	H1	K	L	O	S	W
3000	2300	1678	1560	1500	36°	32°	555	3118	2698	375	5720	100	30	2100

All Dimensional Parameters are within ±2.5% of the Specified values

H1- Transport Height

SPECIFICATIONS

MACHINE MASS	1190	1190D
Operating weight (kg)	11000	11200
Front axle load(kg)	6350	6525
Rear Axle Load (kg)	4650	4675
Static Linear load Front (Kg/cm)	30.2	31.1

VIBRATION SYSTEM

Type : Variable displacement bi-directional Axial piston pump with electrical displacement control for frequency change

Vibration Stage	LF	HF
Frequency (hz)	31	34
Amplitude Nominal (mm)	1.8	0.9
Centrifugal Force (kgf)	26400	17300
Maximum Applied Force (kgf)	37400	28300

TRAVEL**Travel Drive Pump**

Hydrostatic drive - Infinitely variable bi-directional Axial piston pump- Manual Displacement

Rear Axle:

Heavy duty Axle with SAHR Parking brake and Limited Slip Differential (LSD)

Drive Motors :

Rear Axle motor : Bidirectional High speed, Bent axis Motor
Front Drum motor : Bidirectional High Torque Radial Piston Motor (Only in 1190D)

Tyre Size	23.1/26 8PR Tubeless	
Machine speed	1190D (Drum drive)	1190
Working speed 1(Gradient)	4 kmph	4 kmph
Working speed 2	7.5 kmph	4 kmph
Travel speed	12 kmph	12 kmph
Final drive	High torque, out-board planetary	
Gradeability	40% (22°)	31% (17°)

ENGINE

Make	Mahindra & Mahindra
Model	VNEF100 - CEV4
Type Intercooled	4 Stroke, Inline Turbocharged &
Cylinder	4
Displacement	3532 cc
Fuel Injection	CRDI
Fuel	BS-VI Diesel
Fuel filter Cum Water separator	Spin-on type
Fuel pre Filter	Cartridge Type
Air Filter	Dry Type with Dual Element
Engine oil filter	Spin-on type
Cooling	Liquid
Horse power (Gross)	100 hp@2200 rpm as per ISO 1585
Torque (Max)	420 Nm @ 1200-1500 rpm
Exhaust after treatment system	SCR + DOC - Engine Mounded

STEERING

Steering Angle	±37°
Turning Radius(inner)	3.35 m
Drum Oscillation Angle	±15°

ELECTRICAL

Alternator	140 A
Battery	12V / 150Ah

SERVICE CAPACITIES

Diesel	210 L
Hydraulic Oil	70 L
Engine Oil	13.5 L
Engine Coolant Oil	15 L
Drum Oil	25 L
Axle Oil	15 L
Diesel Exhaust Fluid-AdBlue	20 L

BRAKE

Service brake	Hydrostatic brake - FNR Lever control
Secondary brake	Hyd. Pump Neutral - Emergency Button Control
Parking Brake	Spring Applied Hydraulically Released (SAHR) - ON/OFF Switch Control

STANDARD EQUIPMENT

Higher Drum Shell Thickness
Anti Vandalism Cover for Dashboard
Air Precleaner •Rear work lamps •Foldable Canopy
Mobile Charging Point, Water bottle holder, Utility / Tool box
Digital Instrument Cluster
Parking and Secondary brake for additional safety

OPTIONAL EQUIPMENT

Padfoot drum: Bolt-On type Segmentation
Intelligent Compaction System (ICS)
•Front work lamps •Cold Start Kit
•Beacon Lamp •Rear View Camera

WARNING ALARMS

Coolant overheat •Low lube Oil pressure
Hydraulic Filter clog •Parking brake •Battery Charge
Air Filter Clog •Engine Stop •Water in Fuel

INDICATORS

Travel Mode •Engine Coolant Temperature •Battery Charging
Lube Oil Pressure •Parking brake •Water in Fuel •Engine Stop
Hydraulic Oil Filter Clog •Engine Malfunction Check
Low DEF / AdBlue Level & Poor DEF Quality •Air Filter Clog

GAUGES

Lube Oil Pressure •LCD Hour Meter
Engine Coolant Temp •Fuel Level •DEF/ AdBlue Level
Engine RPM •Error Code •Battery Voltage

32, Shivaji Marg, P.O. Box 6223
New Delhi 110 015
Tel : (011) 40819500

Aspire Towers
Plot No: 55, 4th Floor
Industrial Area Phase - 1
Chandigarh 160 002
Tel : (0172) 4646846

A-28 Indiranagar
Faizabad Road, First Floor
Lucknow 226 016
Tel : 0522- 4929920

Monarch Building
D-236 & 237, Amrapali Marg
Vaishali Nagar, **Jaipur** 302021
Tel : (0141) 4385900

Shree Ram Plaza, 2,3 & 4
1st Floor, Siphon Chauraha
Bedla Road-**Udaipur** 313 001
Tel : (0294) 2451 337, 2451 305

3-B, Shakespeare Sarani,
P.O.Box 619, **Kolkata** 700 071
Tel : (033) 4400 2433/22831442

Annapoorna Complex
Plot No. 559, Lewis Road
Bhubaneswar 751 014, **Odisha**
Tel : 9777049626

A1/11, Degaul Avenue
Khoirasol, **Durgapur** 713 212
Tel : 9830057293

Milanpur Road, Bamuni Maidan
Guwahati 781 021
Tel : (0361) 4415/4412
8876554415

101/A, Dumardaga
PO Booti
Ranchi 835 217
Jharkhand
Tel: 9771493164

L&T-House, P.O.Box 119
191/1, Dhole Patil Road
Pune 411 001
Tel : (020) 48544259

501, Sakar Complex
Opp. Gandhigram Rly. Stn.
Ahmedabad 380 009
Tel : 7949004005

AMN Tower, MIPD - 5th Floor (Q4)
L&T Campus, Gate No. 3,
Jogeshwari-Vikhroli Link Road,
Powai, **Mumbai** - 400 072
Ph : 022- 68125813/ 5817/5822

Radhadaya Complex
Near Charodar Complex,
Old Padra Road, **Vadodara** 390 015
Tel : (0265) 2334 799

12, Shivaji Marg
North Ambazari Road,
Nagpur 440 010
Tel : (0712) 6606441/2260025

131/1 Zone II
Maharana Pratap Nagar,
Bhopal 462 011
Tel : (0755) 3080522

Crystal Tower, IVth Floor
G. E. Road, Telibandha
Raipur (CG) 492006
Tel: 9752544407

II Floor, Vasantha Chambers
5-10-173 Fateh Maidan Road
Hyderabad 500 004
Tel : (040) 47575064

38, Cubbon Road
Bengaluru 560 001
Tel : (080) 46136139/37

53-13-2 First Floor, Bank Colony
Srinivasanagar
Vijayawada 520 008
Tel : 9061472255

D No 49-38-14/3/2, 1st Floor,
NGO's Colony, Akkayapalem,
Visakhapatnam - 530 016
Tel: 0891 - 2711121/124

L&T Construction Campus
TC-1 Building, 2nd Floor,
Mount Poonamallee Road,
Manapakkam, **Chennai** 600 089
Tel: (044) 40706864

No. 73, 8th Street,
Karpaga Nagar,
K. Pudur, **Madurai** 625 007.
Tel: 9003944322

Post Bag 7156
67, Appuswamy Road
Coimbatore 641 045
Tel : 9886300106

Skybright Building, M.G. Road,
Ravipuram Junction, P.O.Box 1723,
Ernakulam, **Kochi** 682 016
Tel : (0484) 4409401/409



EQUIP-CARE
Customer Care Number
1800 833 9990



Marketed & Serviced by:

L&T Construction Equipment

Larsen & Toubro Limited

1st Floor Lakshminarayan Complex, 10/1 Palace Road, Bengaluru- 560 052
Tel: (080) 22256982/83/84, 40401700

Visit: www.Lntcmb.com



L&T Construction & Mining Machinery



Larsentoubro.cmb

Zonal Offices:

Delhi (011) 40819500

Kolkata (033) 44002433/22831442

Pune (020) 48544259

Jaipur (0141) 4385900

Nagpur (0712) 6606441/2260025

Hyderabad (040) 47575064

Chennai (044) 40706864